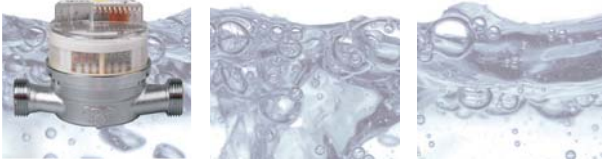


Water meter modularis WZ-M

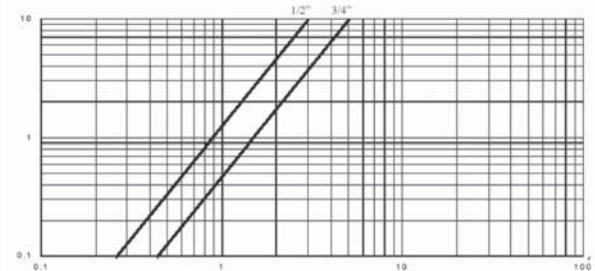


Description

- Single-jet surface-mounted meter
- Installation position horizontal, vertical, down pipe and ascending
- Metrological classification: B horizontal, A vertical
- Sliding friction optimized materials
- Meter housing rotatable by 360°
- 8-digit roller counter with 3 decimal places
- With PTB and EC-approval
- Retrofittable with Modularis modules for remote meter reading (see page 76/77)



Typical pressure drop curve



Volume device

Nominal width (DN)	15	15	20
Nominal flow (Q _n) PTB	1,5 m³/h	1,5 m³/h	2,5 m³/h
Nominal flow (Q _n) MID	3 m³/h	3 m³/h	5 m³/h
Maximum output frequency (f _{max})	0,83 Hz	0,83 Hz	1,4 Hz
Connection external thread - meter	3/4 inch	3/4 inch	1 inch
Connection external thread - thread	1/2 inch	1/2 inch	3/4 inch
Dimensions (L x H x B)	80 x 69 x 70 mm	110 x 69 x 70 mm	130 x 69 x 70 mm
Weight	0,45 kg	0,5 kg	0,58 kg

Order information

	Item No.		
WZK-M cold (30° C)	75124015	75124115	75124025
WZW-M warm (90° C)	75124515	75124615	75124525

Please visit our products website for detailed technical informations, drawings and curves.

Accessory

	Item No.		
Insulating shell small (see page 68)	75120009	75120009	75120010
Pulse module DIN 43864 (see page 74)	8140	8140	8140
M-Bus module (EN 1434-3) (see page 74)	8140	8140	8140
Wireless M-Bus module (see page 75)	8109	8109	8109
Radio module 433 MHz for Q _n 1,5 - 3,5 (see page 75)	8102	8102	8102
KNX pulse modul (see page 75)	75120004	75120004	75120004

Changes, errors and missprints excepted. Products on pictures could include optional parts and modules which are not seperately mentioned.

